

# SM25L, SM16L & SM10L PARTS LIST



This Symbol indicates 242 Loctite Required



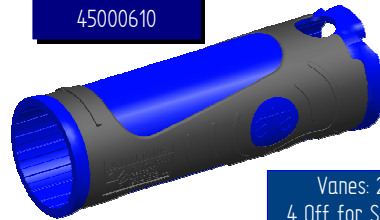
Capnut Spanner  
25561210



Chuck Spanner  
25500510



Motor Housing  
45002710



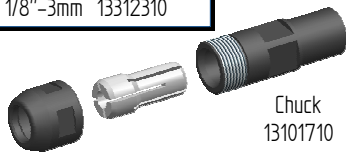
Moulded Sleeve  
45000610

Vanes: 26610510  
4 Off for SM16L/ SM25L  
5 Off for SM10L



Throttle Assembly  
SM25L 45004220  
SM16L 45003320  
SM10L 45003220

6 mm Collet	13312110
<b>Also Available</b>	
8mm	13312420
10mm	13310610
1/4"	13310710
3/8"	13312510
1/8"-3mm	13312310



Chuck  
13101710



Front End Cap  
45003110

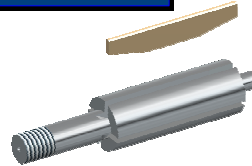
Cap Nut  
12260810

Front Bearing Housing  
15110310



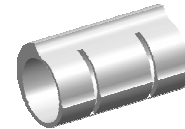
Bearing  
15068900

Front Rotor Spacer  
24410210



Rotor  
SM25L 21101310  
SM16L 21101310  
SM10L 21101810

Rear Rotor Spacer  
24400710

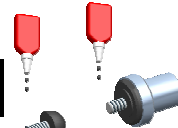


Cylinder  
14411220

Rear Bearing Housing  
15100810



Motor Lock Screw  
45001410  
FOR SM25L



Governor  
SM25L N/A  
SM16L 45003020  
SM10L 45002020

Throttle Housing  
45000710



Throttle Valve Spring  
27701610



Throttle Valve  
45000910



Throttle Shim  
22211310



Throttle Seat  
45001510



Lever Pin  
14014100



Valve Stem  
27900310



O Ring  
18824700



O Ring  
18801100



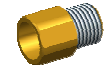
Throttle Plug  
45001110



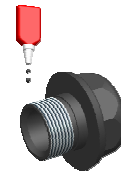
Inlet Hose  
17712120



IMP Versions Only.  
1/4" BSP to 1/4" NPT Adapter  
166-015-10



Hose Connector  
45002910



## STRIPPING TOOL SET PART NUMBER 90055620

MODEL	R.P.M	m <sup>3</sup> /min	kg	dB(A)	m/s <sup>2</sup>
<b>SM25L</b>	<b>25000 RPM</b>	<b>0.62</b>	<b>0.75</b>	<b>78</b>	<b>&lt;2.5</b>
<b>SM16L</b>	<b>16000 RPM</b>	<b>0.62</b>	<b>0.75</b>	<b>77</b>	<b>&lt;2.5</b>
<b>SM10L</b>	<b>10000 RPM</b>	<b>0.62</b>	<b>0.75</b>	<b>74</b>	<b>&lt;2.5</b>

## MOTOR SERVICE KIT

All parts shown highlighted with a blue box are included in service kit  
555-193-20 for SM16 & SM25  
555-202-20 for SM10